



City Manager's Report

November 20, 2018



New (free!) Bike Racks



Thank you Neighbors in Motion (NIM) for helping make this possible!



Remodeled Play Area



BEFORE



AFTER



Tuesday, November 20, 2018 ●

Calling all Volunteers

Get involved today!

- **Safety & Crime Prevention**
 - Neighborhood Watch, Paws on Patrol, and Emergency Preparedness (CERT)
- **Youth & Family Services**
 - Thrift Shop
 - Food Pantry
 - YFS Front Desk
- **Senior Support**
 - Meals on Wheels
 - Senior Social program
 - Senior transportation drivers
- **Parks & Trails Restoration**
 - ... and more!



Visit mercergov.org/volunteer to learn how to get started.

Council Vacancy Deadline: Tomorrow



Applications must be received, no later than 5:00pm tomorrow.

For more information or questions, contact Deb Estrada at 206-275-7793 or deb.estrada@mercergov.org.



City Facilities Closed for Thanksgiving



City facilities will be closed on Thursday and Friday, November 22–23 for Thanksgiving.



Community Dance



- Sat., Nov. 24, 7 – 11pm
- Location: VFW Hall (1836 72nd Ave SE)
- Featuring Little Bill and the Blue Notes
- Dance lessons at 7pm followed by the dance at 8pm
- Fee: \$15



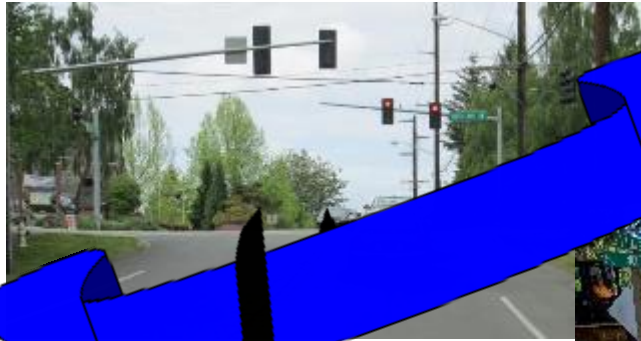
Reception Honoring Rep. Judy Clibborn



- Mon., Nov. 26, 5:30-6:30pm
- Location: City Hall Council Chambers
- City Council will be honoring Rep. Clibborn for her years of dedicated service to Mercer Island



SE 40th Ribbon Cutting Ceremony



Join us December 6 at 10am as we celebrate the successful completion of the SE 40th Street Corridor Project!



Tree Lighting & Firehouse Munch

Mark your calendars!

- Fri., Dec. 7, 6:30 – 8:30pm
- Location: Mercerdale Park & North Fire Station

- Tree lighting at caroling at 6:30pm followed by arts & crafts, Santa photos, treats, and musical entertainment at the Firehouse at 7pm



Parents Night Out Holiday Party with Santa

- Sat., Dec. 8, 5 – 10pm
- Location: MICEC
- Refreshments, crafts, holiday movie, and a visit with Santa and his elves
- Fee: \$39/child; \$29 sibling
- Register at miRecConnect.com
- Course #3062

