

Started at 22:01:50, Duration 00:58:30
 Average Acceptant Duration 13.06
 MAX Number of People in Conference **304**

Answered Calls

Name	Number
Selects For Event	6,566
Accepts	668
TF Calls	30
Toll Inbound Calls	0
Answering Machines	2,996
Declines	968
Total Answered Calls	4,632
Talked	13
Speaker Queue	13
Screeener Queue	0
WEB Participants	16

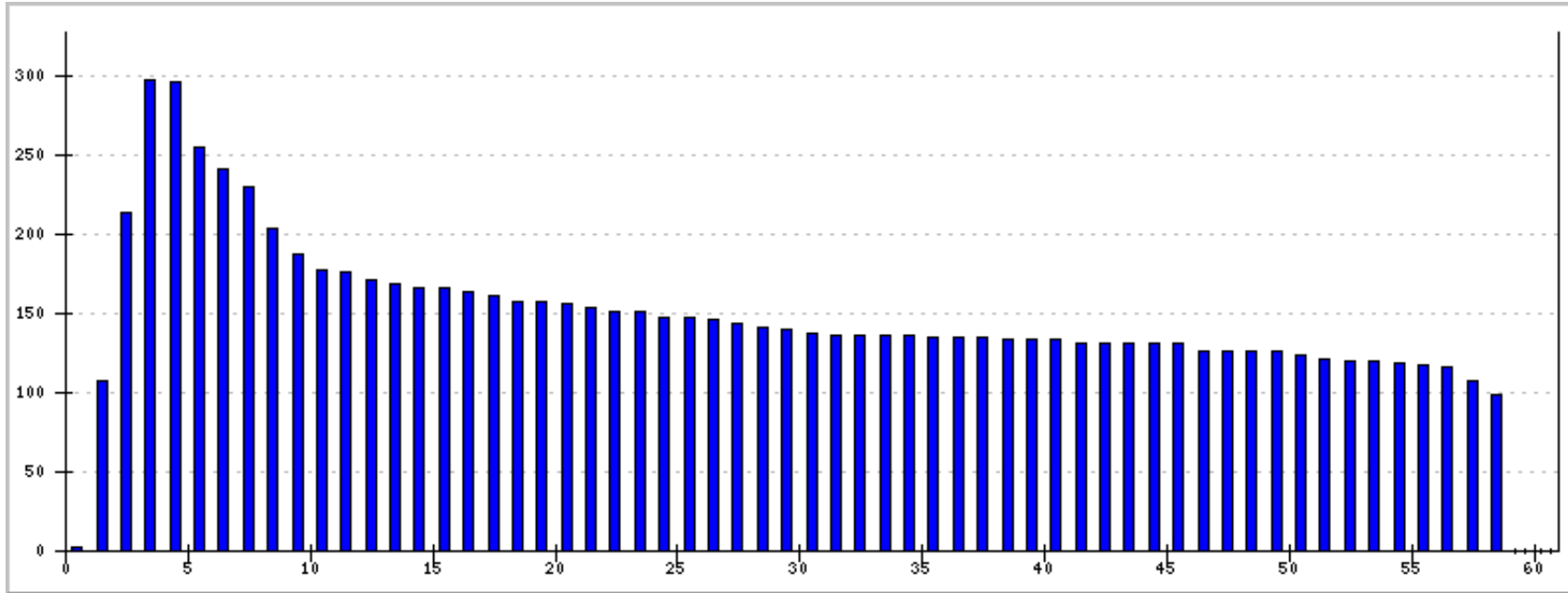
NOTE:

The live polls conducted during this event are non-scientific because respondents are self-selected, and may not represent the views of the broader community.

For its polling to reach a minimum accepted level of statistical significance, the City typically requires at least 300 randomly selected participants to answer any given question.



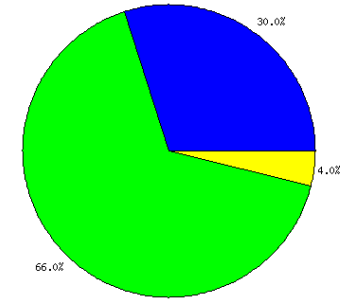
In Conference NOW / Conference Minutes



Polling Questions

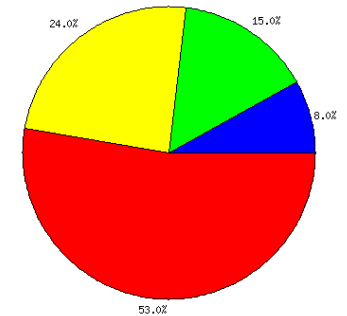
1 How many of you have participated in some kind of forum talking about the city’s budget challenges?

ID	Answer	Responded	% of total
1	Have participated in some meeting or forum or presentation	42	30
2	Have not yet participated	93	66
3	Not sure or don’t know	6	4



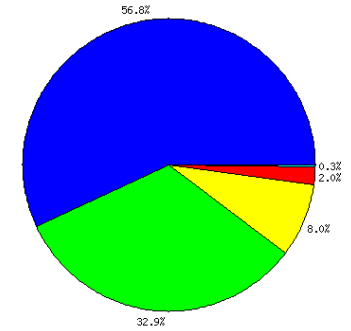
2 How long have you lived on Mercer Island?

ID	Answer	Responded	% of total
1	Less than 5 years	11	8
2	5-10 years	21	15
3	11-20 years	35	24
4	21+ years	76	53



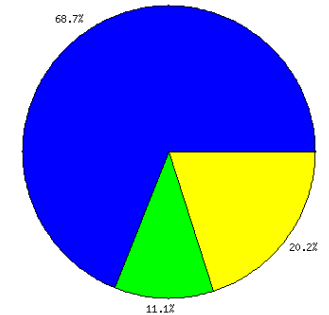
3 How would you rate the quality of life on Mercer Island?

ID	Answer	Responded	% of total
1	excellent	70	57
2	good	40	33
3	average	10	8
4	somewhat poor	2	2
5	very poor	0	0



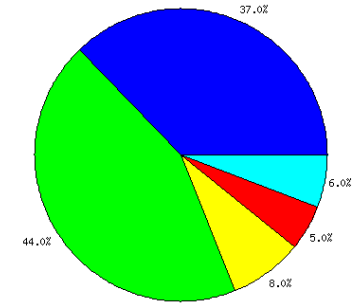
4 Thinking about the level of service the City currently provides to our community, do you think it's:

ID	Answer	Responded	% of total
1	About the right amount of services	83	68
2	Not enough services	14	11
3	Too many services	25	20



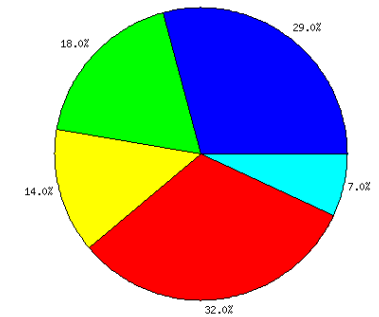
5 How would you rate your satisfaction with City services.

ID	Answer	Responded	% of total
1	very satisfied	46	37
2	somewhat satisfied	54	44
3	somewhat dissatisfied	10	8
4	very dissatisfied	6	5
5	not sure/don't know	8	6



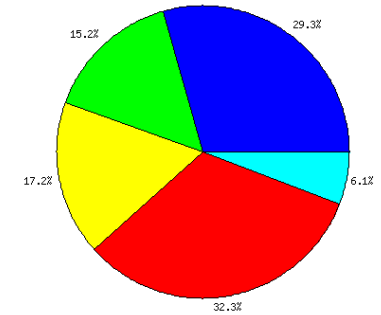
6 Are you in favor of raising Mercer Island's property tax rate above the 1% cap in order to maintain City services at current levels

ID	Answer	Responded	% of total
1	Strongly agree	32	29
2	Somewhat Agree	20	18
3	Somewhat Disagree	15	14
4	Strongly disagree	35	32
5	Not sure / Don't know	8	7



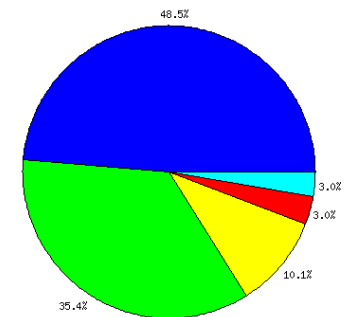
7 Would prefer to see the City cut services and programs rather than ask for an increase in property taxes.

ID	Answer	Responded	% of total
1	Strongly agree	32	29
2	Somewhat Agree	17	15
3	Somewhat Disagree	19	17
4	Strongly disagree	36	32
5	Not sure / Don't know	7	6



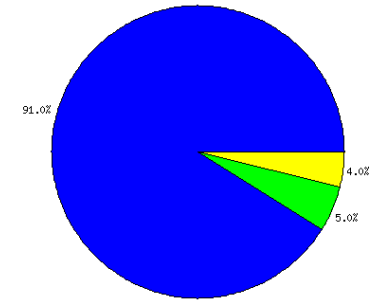
8 Found tonight's Telephone Town Hall to be useful in helping me learn about the City's budget situation.

ID	Answer	Responded	% of total
1	Strongly agree	45	48
2	Somewhat Agree	33	35
3	Somewhat Disagree	9	10
4	Strongly disagree	3	3
5	Not sure / Don't know	3	3



9 Do you think the City should hold more Telephone Town Halls in the future to talk with residents about important issues?

ID	Answer	Responded	% of total
1	Yes, the City should continue holding TTHs	90	91
2	No, the City shouldn't hold more TTHs	5	5
3	Don't know/not sure	4	4



10 If the City's revenue shortfall resulted in service cuts, they would likely fall squarely on non-essential, quality of life services, namely Parks & Recreation, and school mental health counselors in the Youth & Family Services Department. Do you agree with that approach?

1	Strongly Agree	22	22
2	Somewhat Agree	19	19
3	Somewhat Disagree	17	17
4	Strongly Disagree	25	25
5	Don't know or aren't sure	16	16

